

Sneller MACHINE **STUMP** Mill 275



Turn your Excavator or Forestry machine into a
High Production Stump Grinding Machine With A

Sneller Machine

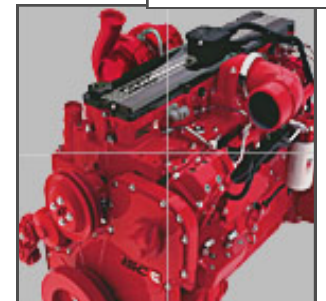
STUMP MILL

Proven Power Plants

The engine has to be able to perform. The Stump Mill and shredder are powered by true performers.

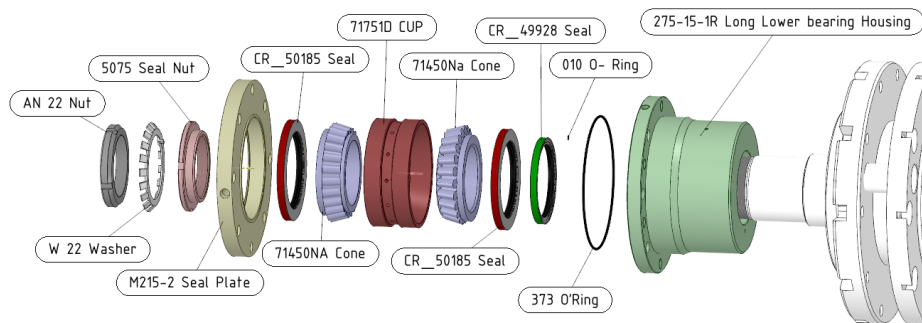
The Cummins QSB. 275 & 170 HP. engines, these engine were selected, for Their unbeatable power to weight ratio, durability and low cost of operation.

QSB



Triple Sealed Lower Bearings

The *patented Sneller lower bearing system incorporates triple sealing and large Timken bearings. This design protects the bearings from dirt, debris, water and extend lower bearing life up to 10,000 hours of operation



STUMP Mill **170**



Stump Mill 275

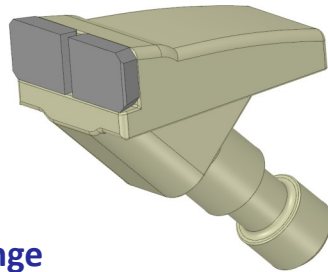


Get More Done - Move Less

Adding a self powered Stump Mill to the boom turns an excavator into a versatile stump grinding machine that crawler type machines can't match.

Just swing Over to you Next stump Instead of tracking.

The Sneller allows reaching over banks and up hill sides.



**M250-2-3 Teeth Change
with a Punch and Hammer
No Bolts Needed**



170 Stump Mill





Specifications

275 Stump Mill

ENGINE

Model ----- Cummins QSB 6.7
Type ----- 4 cycle, water cooled
Aspiration ----- Turbo & air charge
Max Torque ----- 730 ft/lb



COOLANT, LUBE, FUEL

Radiator ----- 7.0 us gal.
Engine oil** ----16.3 liters / 17.2 qt.
Gear oil ----- 1.25 us gal.
Grease ----- Every 2 to4 hr. operation

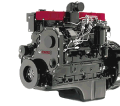
PRODUCTION

Average acres per. day ----- 4
Max. acres per. day ----- 6
10"oak 10" tall ----- 15sec.
48"oak 23" tall cut
36" below grade-----13min.

REQUIRED EXCAVATOR WEIGHT / STUMP MILL WEIGHT

Excavator weight ----- 20 metric ton or more
 Stump Mill 275 V Mill ----- 7,800 lb.

Specification are subject to change without prior notification



Specifications

170 Stump Mill

ENGINE

Model ----- Cummins QSB 4.5
Type ----- 4 cycle, water cooled
Aspiration ----- Turbo & air charge
Max Torque ----- 460 ft. / lb.



COOLANT, LUBE, FUEL

Fuel tank*----- 1.0 us gal.
Radiator ----- 7.0 us gal.
Engine oil**----11 liters / 11.6 qt.
Gear oil lube----- 11 Qt. Total.
Grease ----- Every 2 hr. operation

PRODUCTION

Average acres per. day — 2
Max. acres per. day — 4
10"oak 10" tall — 40 sec.

REQUIRED EXCAVATOR WEIGHT / STUMP MILL WEIGHT

Excavator weight ----- 16 metric ton or more
 Stump Mill 170 V Mill ----- 5,800 lb.

A Division of Grand Harbor yacht sales And
Service Inc.