

SHREDDER 275



Do More Cutting and less Tracking

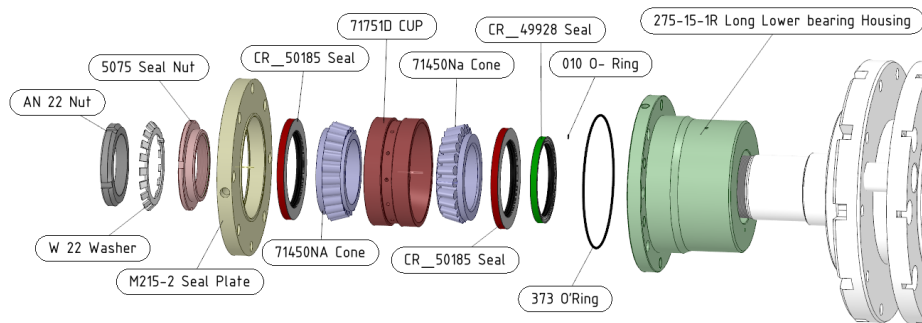
With a Sneller Shredder On your Boom not only can you cut trees but you can also cut out all that tracking that creates ruts.

The shredder lets you cut trees while still standing instead of chasing them around on the ground.

Mounted to your boom it also lets you reach up and down in to places crawlers could never get

Triple Sealed Lower Bearings

The *patented Sneller lower bearing system incorporates triple sealing and large Timken bearings. This design protects the bearings from dirt, debris, water and extend lower bearing life up to 10,000 hours of operation



Standard on 275 and 170 models

SHREDDER 170



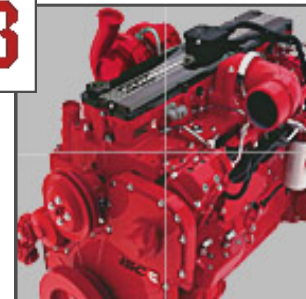


Proven Power Plants

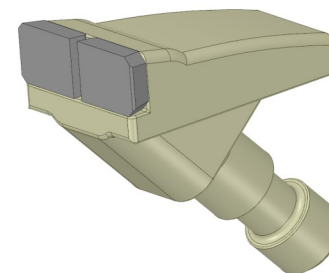
QSB

The engine has to be able to perform.
The Stump Mill and shredder are powered by true performers.

The Cummins QSB. 275 & 170 HP. engines, these engine were selected, for Their unbeatable power to weight ratio, durability and low cost of operation.



**M250-2-3 Teeth Change
with a Punch and Hammer
No Bolts Needed**



**SHREDDER
60**

Also Available in Lighter more economical 60 HP.
3,000 lb. Model for 8 to 18 metric ton Excavators



Shredder 170



Specifications

275 Shredder

ENGINE

Model ----- Cummins QSB 6.7

Type ----- 4 cycle, water cooled

Aspiration ----- Turbo & air charge

Max Torque ----- 730 ft/lb



COOLANT, LUBE, FUEL

Radiator ----- 7.0 us gal.

Engine oil** ----16.3 liters / 17.2 qt.

Grease ----- Every 2 to4 hr. operation

*Fuel is used from excavator

**pan only / complete engine

PRODUCTION

Average acres per. day ----- 4

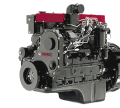
Max. acres per. day ----- 10

REQUIRED EXCAVATOR WEIGHT / STUMP MILL WEIGHT

Excavator weight ----- 20 metric ton or more

Shredder 275 ----- 8,800 lb.

Specification are subject to change without prior notification



Specifications

170 Shredder

ENGINE

Model ----- Cummins QSB 4.5

Type ----- 4 cycle, water cooled

Aspiration ----- Turbo & air charge

Max Torque ----- 460 ft. / lb.



COOLANT, LUBE, FUEL

Fuel tank*----- 1.0 us gal.

Radiator ----- 7.0 us gal.

Engine oil** ----11 liters / 11.6 qt.

Grease ----- Every 2 hr. operation

PRODUCTION

Average acres per. day ----- 2.5

Max. acres per. day ----- 8

REQUIRED EXCAVATOR WEIGHT / STUMP MILL WEIGHT

Excavator weight ----- 16 metric ton or more

shredder 170 ----- 5,800 lb.

A Division of Grand Harbor yacht sales And
Service Inc.